



FALL 2019 Conference

Thinking in Shapes

The Future of Interoperability

Paul Stusiak (Falcon Technologies)

Josh Darnell (RESO)

Panelists

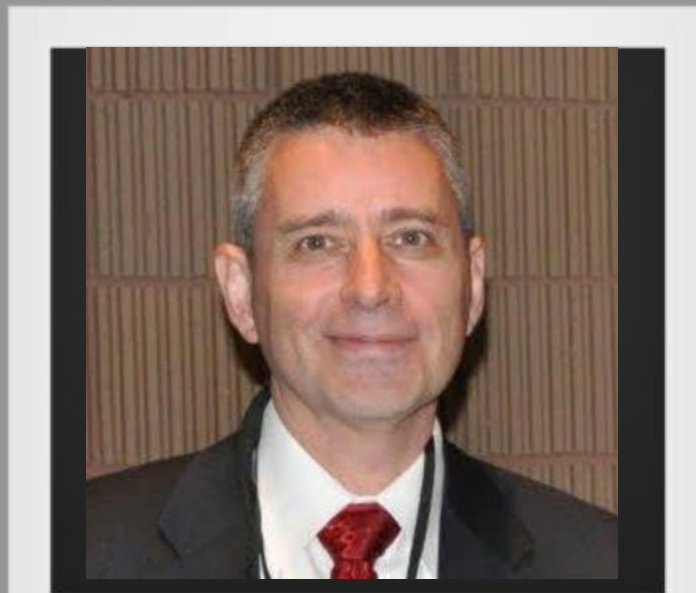
Mark Bessett (CRMLS) • Jon Druse (W+R Studios)

Chris Haran (MRED) • L.D. Salmanson (Cherre)

Speaker

Paul Stusiak

President, Falcon Technologies



Paul has been involved with RETS and RESO since 1999. He is the co-chair of the Transport Workgroup. His background is in Electrical Engineering.

Falcon Technologies provides development of real estate technologies and has worked on many different projects that deliver standards compliant systems on both the server side and on the client side.

pstusiak@falcontechologies.com



Speaker

Joshua Darnell

Chief Architect, RESO

Josh has been involved with RETS and RESO since 2001. He has worked for large MLS Vendors, Real Estate Start-ups, and MLSs and Brokerages since 2000. His background is in Computer Science, Math, and Bioinformatics.

josh@reso.org



What Are Data Shapes?

Key to Interoperability

Currently, much variance exists among queries and data sets...

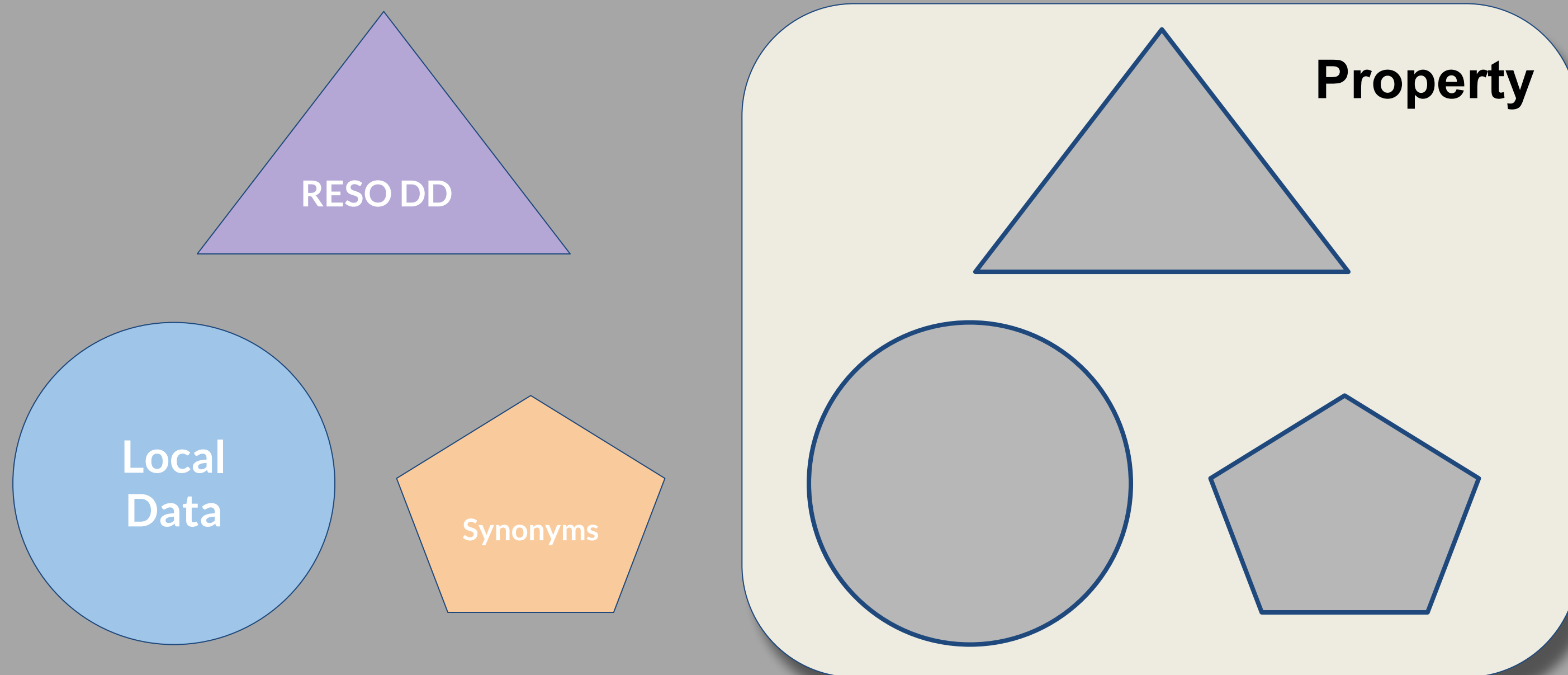
Integrations are slow and brittle and require lots of extra code!

Locale is challenging, but
Real Estate is hyper-local!
Distance to Gateway Arch?

RESO FALL 2019 Conference



Shapes Create Consistency

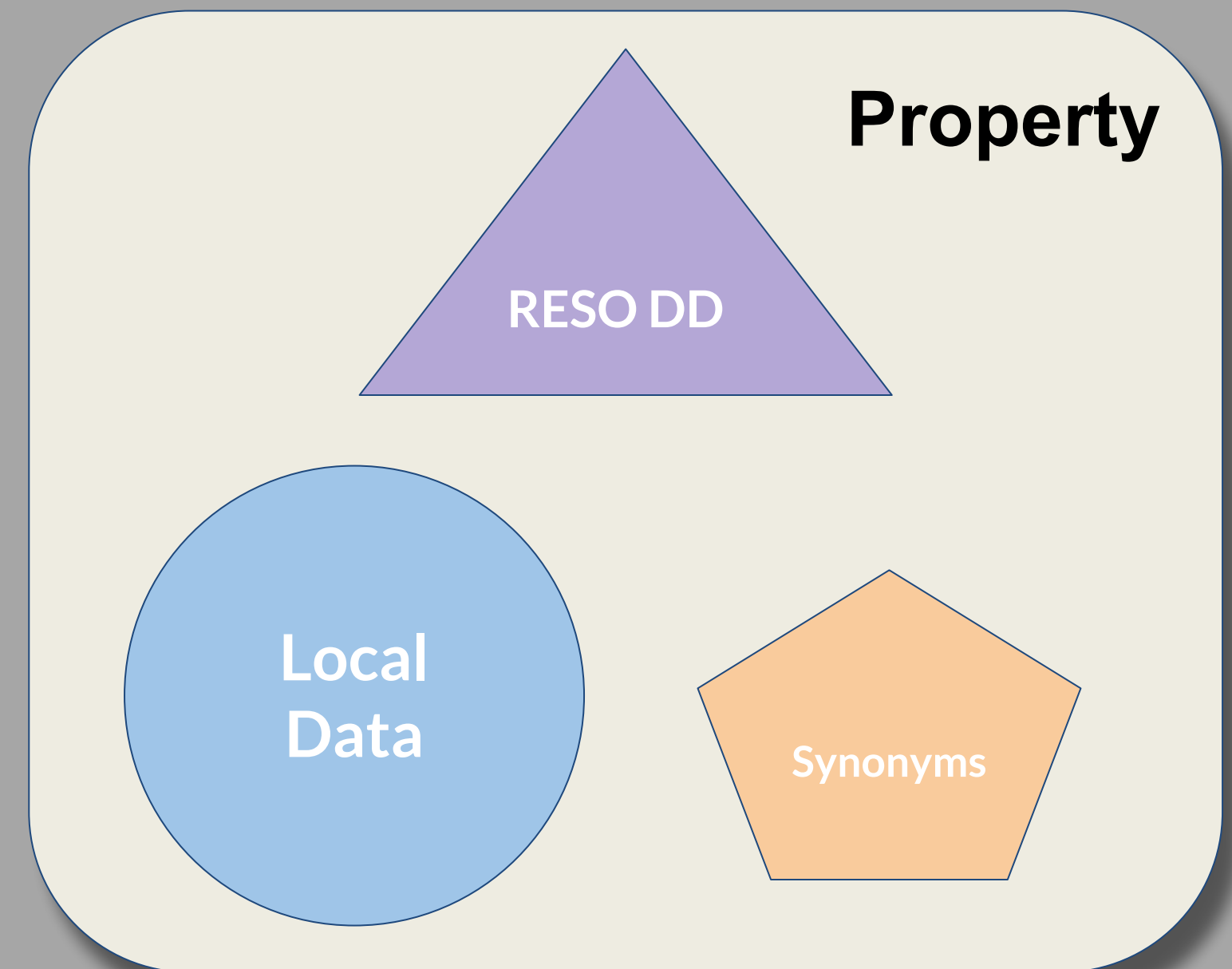


Shapes Create Predictability

RESO Data Dictionary
Provides the Foundation
for Data Shapes

Local Data can be added to
each Resource, in this case
Property

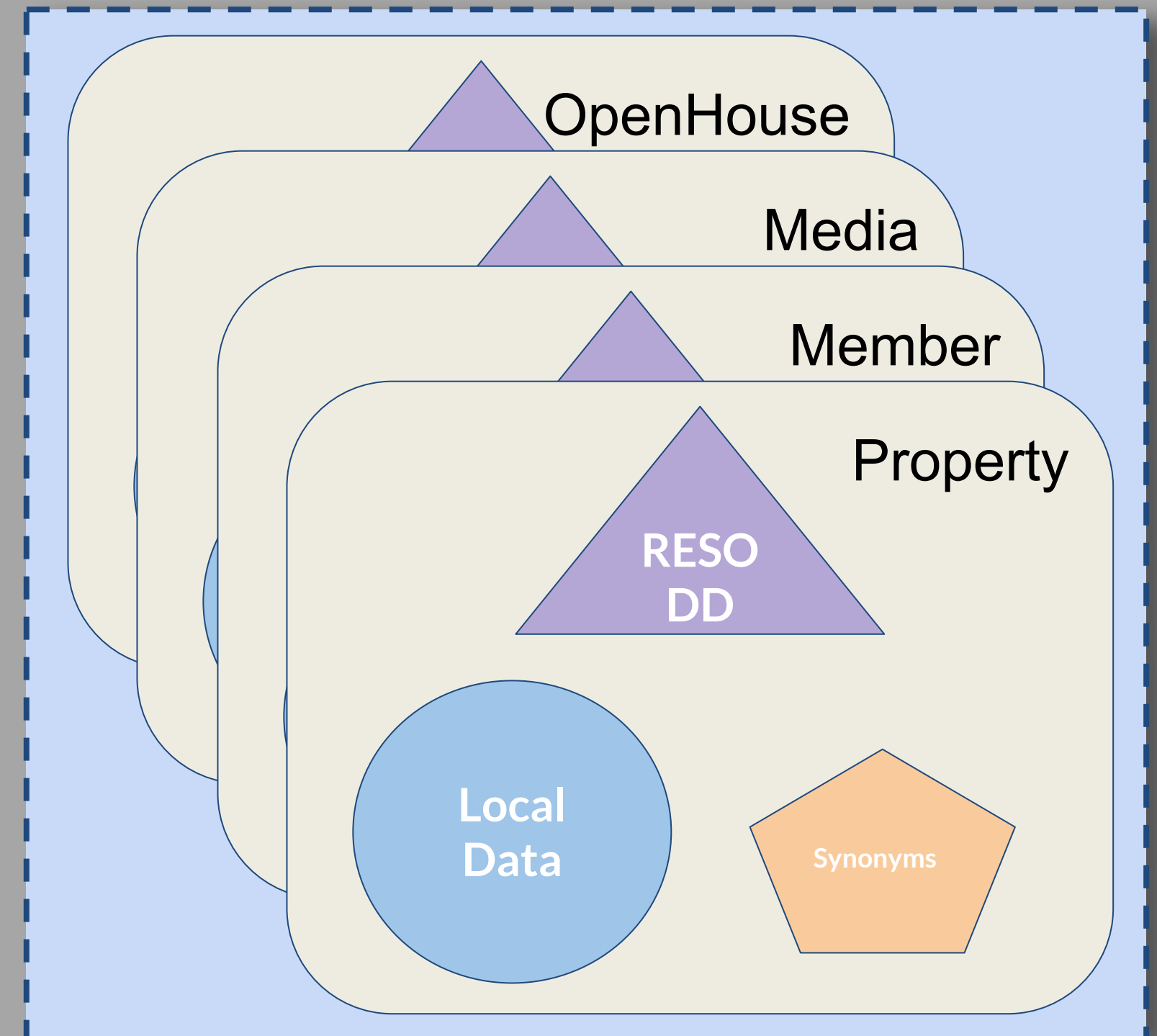
Synonyms can be
projected onto DD and
Local Data to provide Local
Names and Translations



Shapes Provide Ease of Use

Eventually, data can even be packaged into bundles consisting of related data.

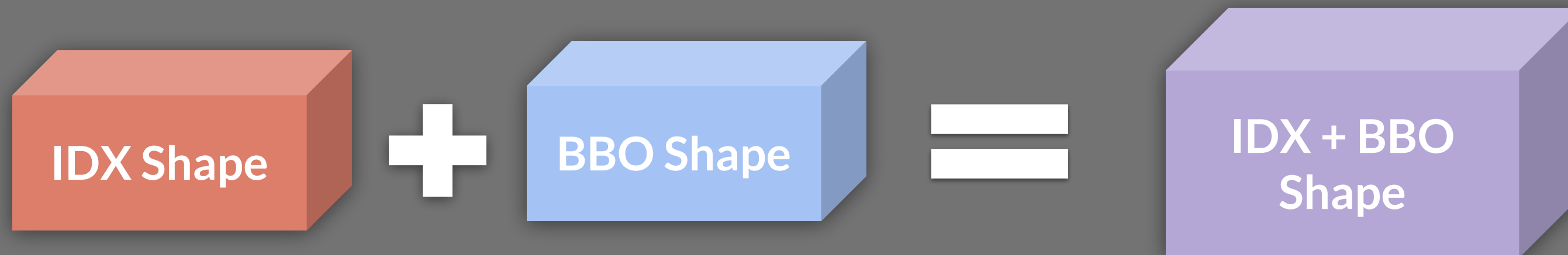
For example: *all Property, Member, Media, and OpenHouse data for a given set of Listings.*



Fun with Shapes:

Streamline Data Transfers

Consider a data consumer who needs both IDX and BBO payloads...



Data may be returned in a single response that contains both data sets!

Panel Discussion

Common Schema Goals

- Reference Metadata for Resources, Fields, Enumerations, and Relationships for DD 1.6+
- Standard Data Shapes
- Localization and Internationalization

Workgroup meets every other Thursday for 45m.

See RESO Calendar or talk to Paul and Josh!

RESO FALL 2019 Conference

PANELISTS



Mark Bessett

Enterprise Architect
CRMLS



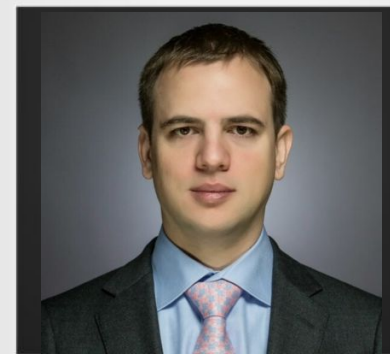
Jon Druse

Director of Engineering
W+R Studios



Chris Haran

CTO
MRED



L.D. Salmanson

CEO, Co-Founder
Cherre

Data Shapes

RESO FALL 2019 Conference

Data Shapes are useful for MLSs, MLS Vendors, Aggregators, Syndicators, Analytics Providers, Brokerages, and other Data Producers and Consumers involved in the Transaction.

Cherre

Story or Quote that
hits the message out
of the park!

CRMLS

Story or Quote that
hits the message out
of the park!

MRED

Story or Quote that
hits the message out
of the park!

W+R

Story or Quote that
hits the message out
of the park!

SOCIAL MEDIA

USE THE CONFERENCE
HASTHAG **#RESO19**

Follow us and see what is happening on our
social media sites!

Real Estate Standards Organization

#RESOStandards

@RESOStandards

RESO!



RESO FALL 2019 Conference

RESO FALL 2019 Conference

THANK YOU!

Comments or Questions?

SEE YOU IN NEW ORLEANS!

