

Data Dictionary Workgroup



**ACCELERATING
THE REACH
OF DATA STANDARDS**

Agenda

- Process Review
- December On Site Meeting & Worksheet
- Commercial PropertySubType
- Ownership / Structure & PropertySubType
- “[type]” Enumerations
- Saved Search, Contacts, Auto Email Relationships
- BOD Priorities

New Submission Process

- Suggestions through Wiki (Current & Draft)
- Posted to Confluence for Discussion
- Managed in Confluence Tasks (admins)
- Utilization from Requestor and Cert. Team
- Tempered Change for Stability

Review Process

- Focus on Stability Around Changes
 - Pre-Discussion on Confluence
 - Utilization from Requestor and Cert. Team
 - Workgroup Meeting
 - Board Approval

Resources

- **members.reso.org/display/DD**
 - Confluence Discussion
 - Links to Wiki (1.5 and 1.6 Draft)
- **ddwiki.reso.org**
 - The current Dictionary (1.5)
- downloading the DD from 1.5 or 1.6 wiki
 - Side Menu > DD Introduction > Downloading...

December Enumeration Escapade

- Confluence > DD > Gold Enumeration Worksheet
- December 6th and 7th
- San Dimas, California



Gold Enumeration Worksheet Review

- <https://drive.google.com/open?id=0B2qxAOyvpRBxME9jVktVOEx3RWc>

Commercial PropertySubType

- Long and Short Lists
- Sub Groups to the Sub Type
- Propose Extendable “Medium List”
 - 3+ Submissions & Not a Business Type
- Add to PropertySubType
- Individuals Okay to Create a Sub Sub Type

Commercial Property Sub Types

- Agriculture
- Business
- Hotel/Motel
- Industrial
- Mixed Use
- Multi Family
- Office
- Retail
- Unimproved Land
- Warehouse

Ownership & Structure

- Gradual Replacement of Property Sub Type
- Describe Types of Ownership
 - Not ownership structures
 - (Individual, Partnership, Corporation, Trust)
 - Not forms of transfer / financing
 - (Contract for Deed, Right to use, In Acquisition)
- Describe the types of Structures
 - Not styles or architecture

Ownership

It's either...

Fee Simple (Freehold) or Lease (Leasehold)

But also consider...

Types of Common Interest

Types of Common Interest

RESO's Prop Sub Type

- Condominium
- Stock Cooperative
- Timeshare

Canada differs on...

- ↔ Strata
- ↔ Cooperative

Other Common Interest

- Planned Development
- Community Apartment
- None

One or More Fields?

- LandLeaseYN is Established
- Fee Simple is Generic
- Serve Existing Community

Ownership Option 1

Keep existing LandLeaseYN and add new field
CommonInterest

- Condominium
- Planned Development
- Community Apartment
- Stock Cooperative
- Timeshare
- None

*LandLeaseYN = No means Fee Simple / Freehold

Ownership Option 2

Deprecate LandLeaseYN and replace with

OwnershipType

- Land Fee Simple
- Condominium
- Planned Development
- Community Apartment
- Land Lease
- Stock Cooperative
- Timeshare

Structure Type (or PropertySubType?)

Single Family Residence

Manufactured Home

Townhouse

Apartment (Condo?)

Duplex

Triplex

Quadraplex

Boat Slip

Deeded Parking

Cabin

Farm

Ranch

+ our Commercial list

Structure Options

- Option1: Create a new Structure Type
 - Eventually deprecate PropertySubType
 - What to do with non structure items?
(Parking, Farm, Ranch, Boat Slip)
- Option2: Keep PropertySubType
 - Only deprecated ownership items
 - Don't add StructureType

Decision to Enumerate Repeating Elements

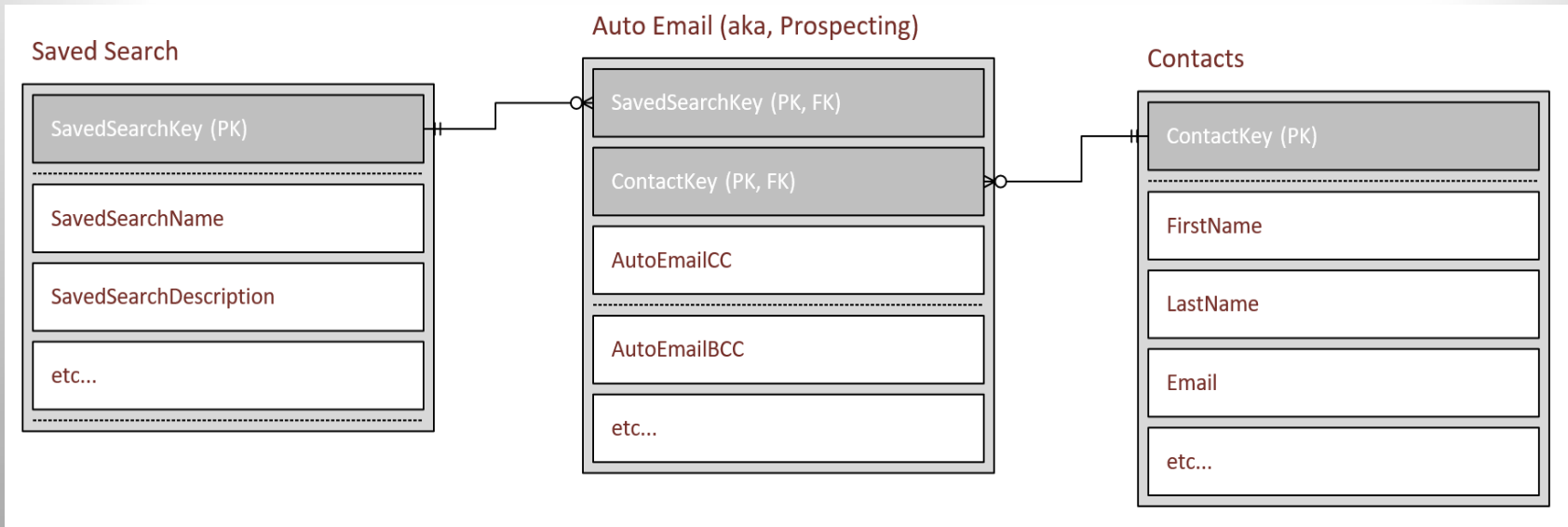
- Pretty Easy (one size fits all)
 - Room[type]Level
 - Room[type]LengthWidthSource
 - Room[type]Furnished
- Room[type]Features
 - Features can be different for each type
 - 31 types
 - Tackle the “low hanging fruit?”

Room Types to Enumerate Features

- Bedroom & Bathroom
 - One list, or different lists for rooms 1-5 & master.
- Kitchen
- Other Fields
 - Basement, Bonus Room, Den, Exercise Room, Family Room, Game Room, Great Room, Gym, Laundry, Library, Living Room, Loft, Media Room, Office, Sauna, Utility Room, Workshop

Saved Search, Contacts and Auto Email Relationships

- <http://members.reso.org/dd>
- ERD 4

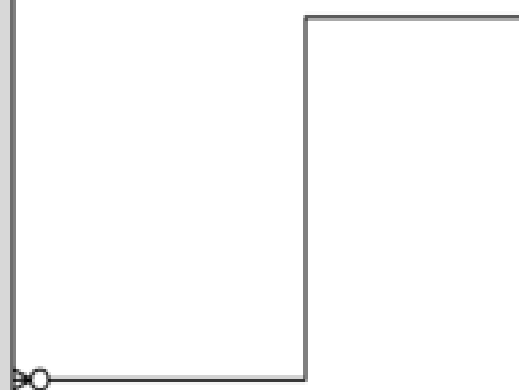


ERD 1 – One Contact to Many Saved Searches

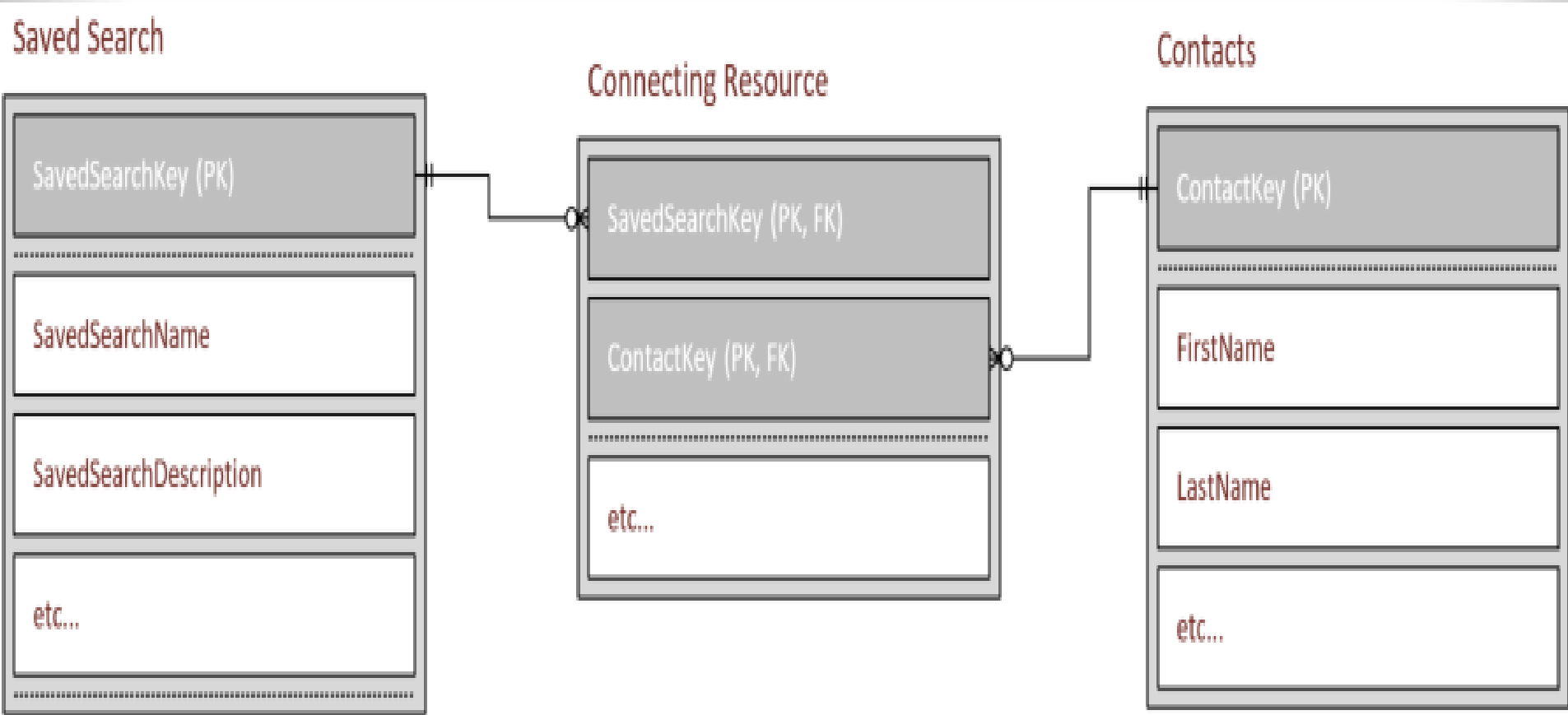
Saved Search



Contacts

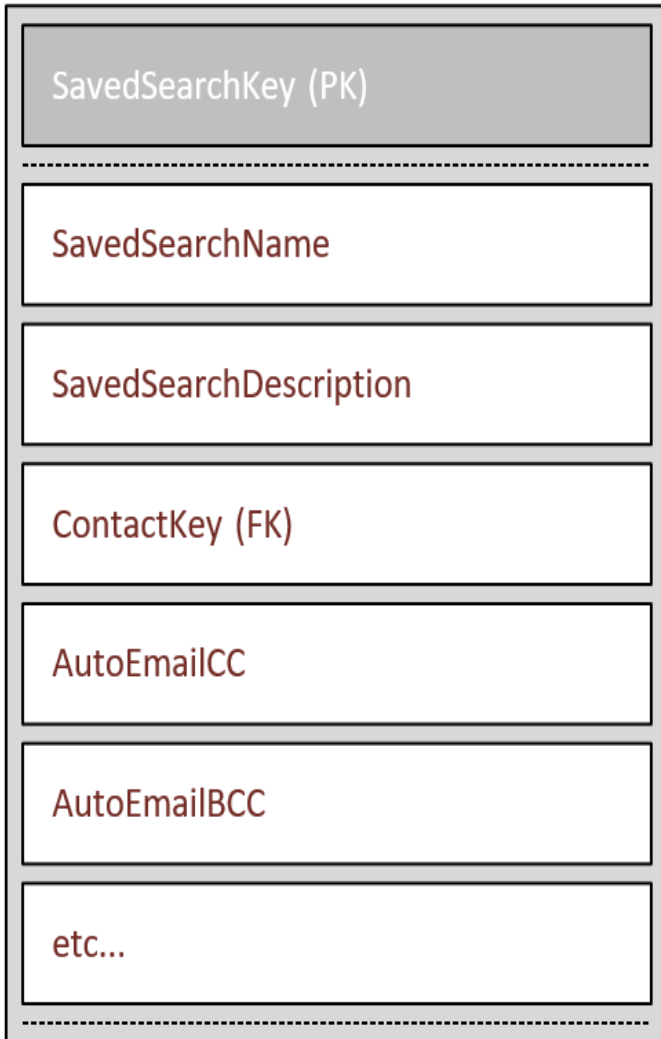


ERD 2 – Many Contacts to Many Saved Search

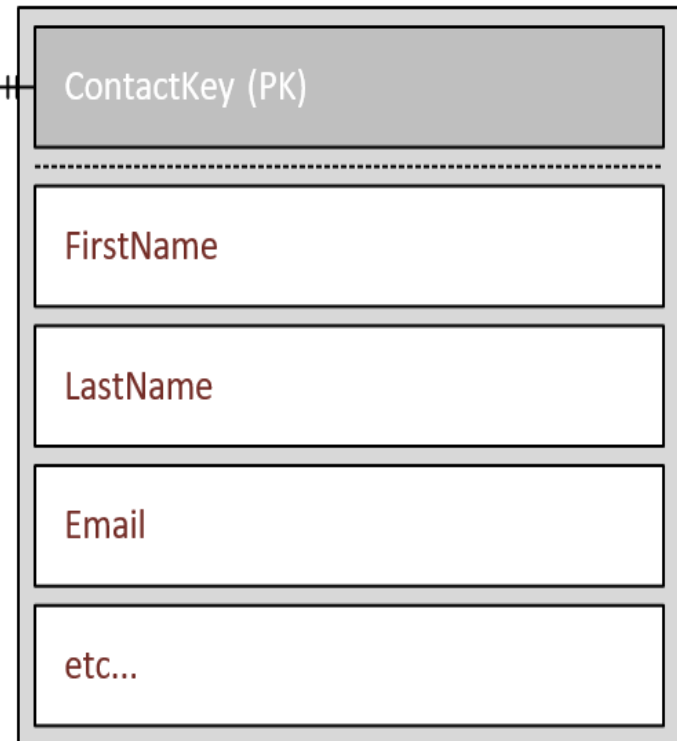


ERD 3 = ERD1 + Auto Email

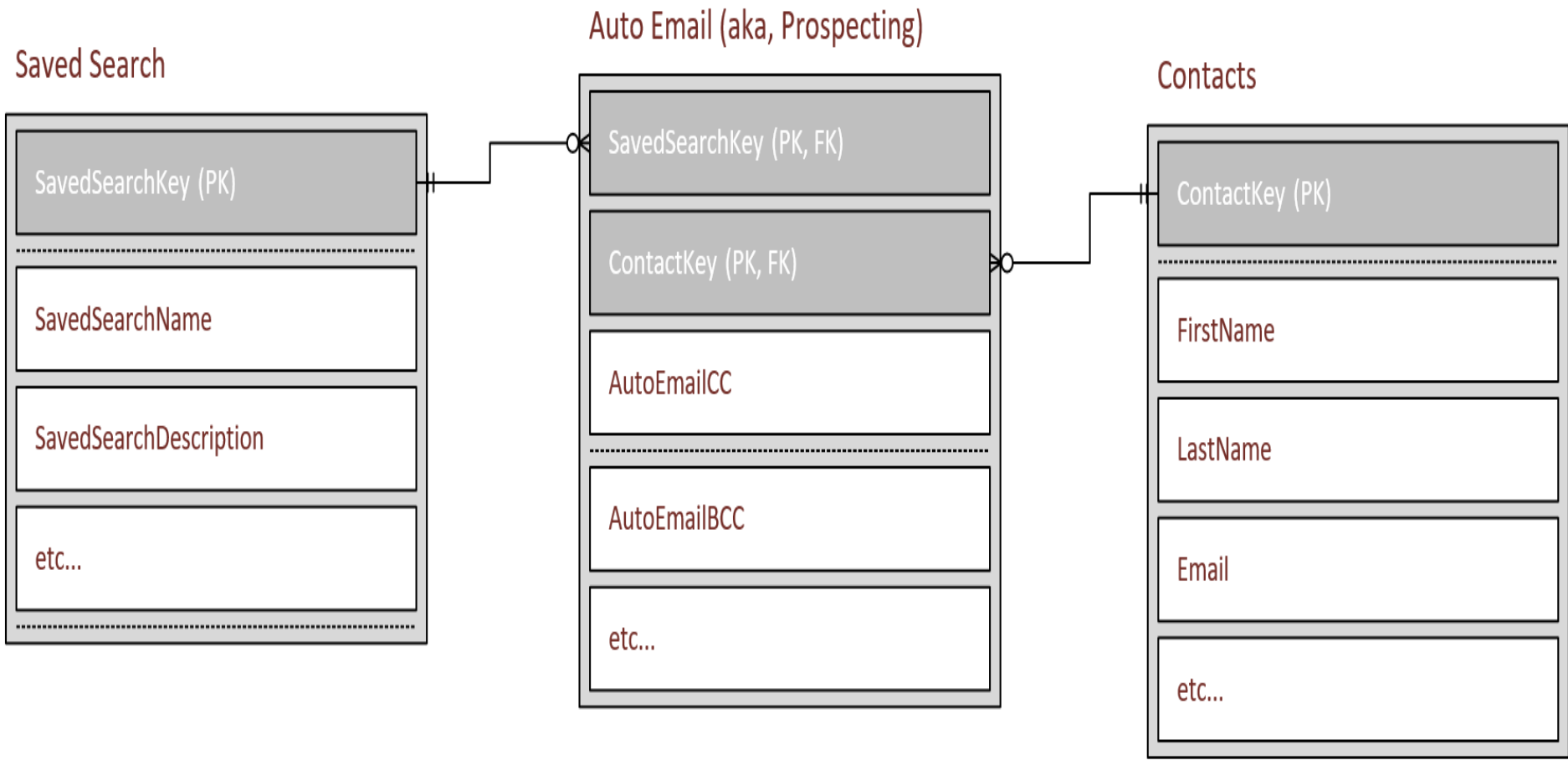
Saved Search



Contacts

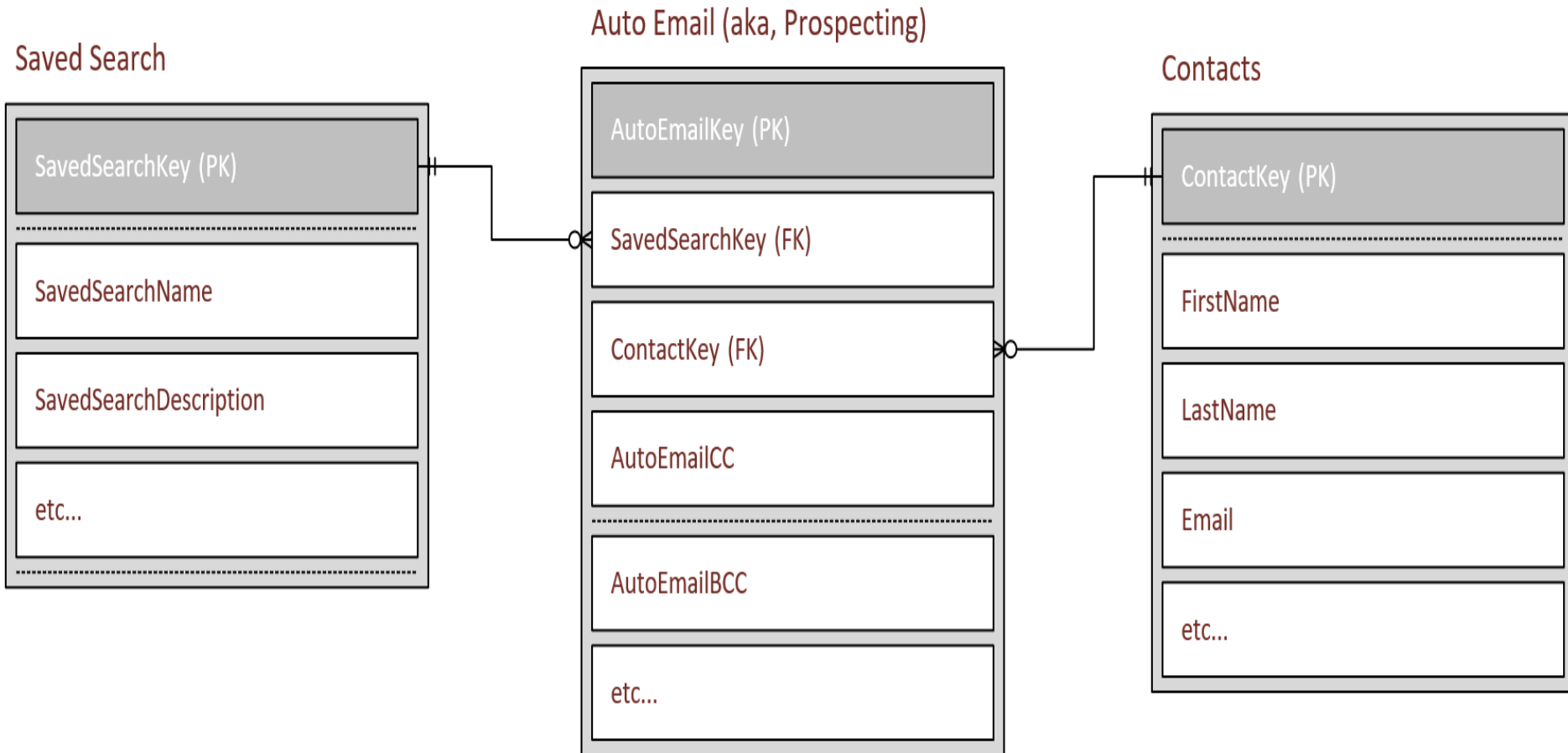


ERD 4 = ERD 2 + Auto Email



ERD 5 = ERD 4 + Many Auto Email

- Probably too much...



ERD 4?

- a Contact can have many Saved Searches
- a Saved Search can be reused across Contacts
- a Contact's Saved Search can be Auto Email
- doesn't over complicate Auto Email

BOD Priorities for v1.6

- Accessibility
- Showing Data
- Gold Enumerations
- Saved Searches, Carts and Portal Preferences
- Internet Tracking Fields

Accessibility

- Reviewing ADA
 - e.g. <https://www.access-board.gov/guidelines-and-standards/buildings-and-sites/about-the-ada-standards/ada-standards/chapter-1-application-and-administration#106%20Definitions>
- Collecting Enumerations for December Meet

Showing Data

- Not Listing Data, e.g. Showing Instructions
- Schedules and Appointments
- Contacts and Locations
- Vendor Participation
- Why? Portability & Interoperability
- Showing Data Subgroup Volunteers

Gold Enumerations

- 19 Fields
- Worksheet at <http://members.reso.org/dd>
- Map your Enumerations into Sheet
- Email to Rob@crmls.org
- Finalize at Dec 6-7th In Person Meeting
- Also Pending Enums and some Platinum?

Save Search

- Saved Search Resource in v1.3
- Gold Enumerations
- Search Criteria
 - Examples at <http://members.reso.org/dd>
 - Create Specification

Carts

- Collections of Listings
- Associated Contacts
- Schema Submissions by Jan 31st

Portal Preferences

- Notes on Listings Between Member & Client
- Favorites, Dislikes, etc. on Listings
- Posting Initial Structure on Confluence
 - Contact Key
 - Listing Key
 - Notes Collection
 - Listing Preferences (i.e. Favorite, Discard)

Internet Tracking

- Schema for tracking data portability
- Internet Tracking Workgroup
- Posted on Confluence this Winter

Q & A

Rob Larson, CIO
California Regional MLS
rob@crmls.org